

**GREATER VANCOUVER REGIONAL DISTRICT
BYLAW NO. 1075, 2008**

A Bylaw to Authorize the Sale of Portions of Tynehead Regional Park

WHEREAS:

A. Pursuant to Section 941.1 of the *Local Government Act*, the board of a regional district may, by bylaw, sell a regional park or portion thereof, provided it has obtained approval of the electors by alternative approval process;

B. The Greater Vancouver Regional District is the registered owner of certain lands situated in Tynehead Regional Park in Surrey, British Columbia, being two parcels of land comprising 796.9 square metres (0.197 acres) and 1770 square metres (0.437 acres) respectively, and more particularly known and described as:

1. Parcel identifier: 009-200-355

Legal Description: A portion of Lot 10 except: firstly; part on Highway Plan 28296; secondly; part on SRW Plan 50683 Section 6 Township 9 New Westminster District Plan 24769 outlined in heavy black line on the plan provided by FCS Land Service reduced and attached hereto as Schedule "A".

2. Parcel Identifier: 009-200-380

Legal Description: A portion of Lot 11 except; part on SRW Plan 50683 Section 6 Township 9 New Westminster District Plan 24769 outlined in heavy black line on the plan provided by FCS Land Service reduced and attached hereto as Schedule "B".

(the "Lands");

C. The board has determined that the Lands are surplus to and not necessary for the operation and enjoyment of Tynehead Regional Park;

D. The Board has obtained the approval of the electors by way of alternative approval process to sell the Lands;

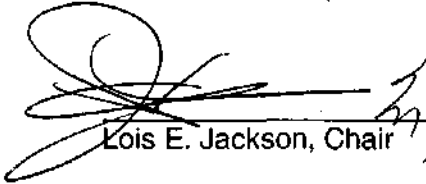
NOW THEREFORE the Board in open meeting assembled enacts as follows:


1. The Lands may be sold or exchanged for other land to be used for park purposes and the sale of the Lands hereunder will have effect free of any dedication to the public for the purpose of a park.

2. This bylaw shall be cited as "Greater Vancouver Regional District Disposition of Part of Tynehead Regional Park Bylaw No. 1075, 2008."

READ A FIRST, SECOND, AND THIRD TIME this 28th day of March, 2008.

RECONSIDERED, PASSED, AND FINALLY ADOPTED this *3* day of *May*, 2008.


Lois E. Jackson, Chair *May 23, 2008*


Paulette A. Vetleson, Corporate

Secretary

REFERENCE PLAN FOR ROAD DEDICATION
OVER PART OF LOT 10 EXCEPT: FIRSTLY;
PART OF HIGHWAY PLAN 28296; SECONDLY;
PART ON SRW PLAN 50683, SECTION 6,
TOWNSHIP 9, NEW WESTMINSTER DISTRICT,
PLAN 24769.

PLAN EPP470

Pursuant to Section 107 of the Land Title Act.

BCGS 92G.017
Scale = 1:500



The intended plot size of this plan is 432mm in width and 560mm in height, (C size), when plotted at a scale of 1:500.

LEGEND

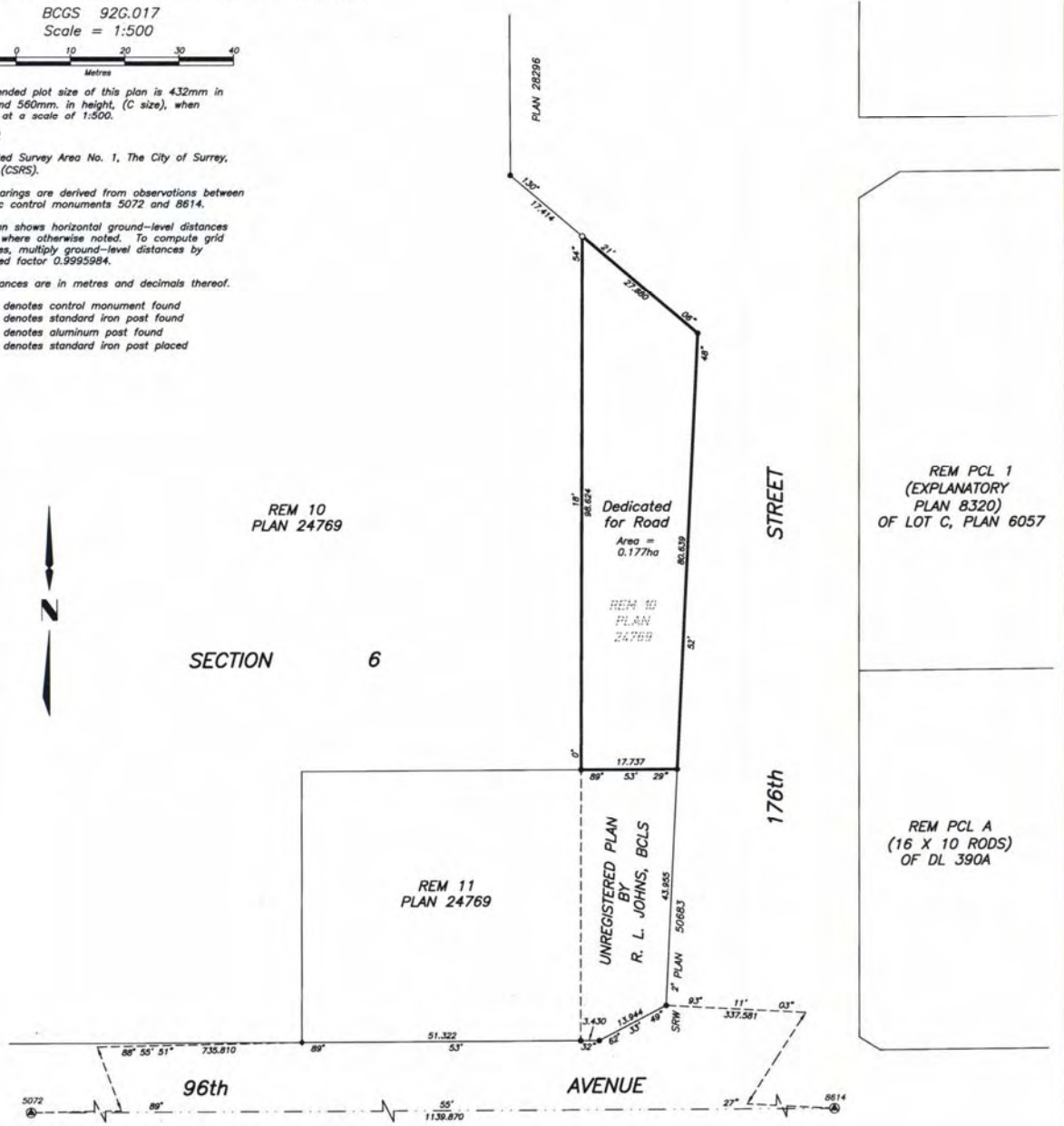
Integrated Survey Area No. 1, The City of Surrey, NADB3 (CSRS).

Grid bearings are derived from observations between geodetic control monuments 5072 and 8614.

This plan shows horizontal ground-level distances except where otherwise noted. To compute grid distances, multiply ground-level distances by combined factor 0.9995984.

All distances are in metres and decimals thereof.

- ⊕ denotes control monument found
- denotes standard iron post found
- ◆ denotes aluminum post found
- denotes standard iron post placed



REM PCL 1
(EXPLANATORY
PLAN 8320)
OF LOT C, PLAN 6057

REM PCL A
(16 X 10 RODS)
OF DL 390A

This plan lies within the Greater Vancouver Regional District.

The Field Survey represented by this plan was completed by Ronald L. Johns, BCLS, on the 29th day of January, 2008. ECP# 76676.

FOCUS
FCS Land Services Limited Partnership
PROJECT REF./DRAWING No.
030200163R02

**REFERENCE PLAN FOR ROAD DEDICATION
OVER PART OF LOT 11, EXCEPT: PART ON
SRW PLAN 50683, SECTION 6, TOWNSHIP 9,
NEW WESTMINSTER DISTRICT, PLAN 24769.**

PLAN EPP469

Pursuant to Section 107 of the Land Title Act.

BCGS 92G.017
Scale = 1:500



The intended plot size of this plan is 432mm in width and 560mm in height, (C size), when plotted at a scale of 1:500.

LEGEND

Integrated Survey Area No. 1, The City of Surrey, NAD83 (CSRS).

Grid bearings are derived from observations between geodetic control monuments 5072 and 8614.

This plan shows horizontal ground-level distances except where otherwise noted. To compute grid distances, multiply ground-level distances by combined factor 0.9995984.

All distances are in metres and decimals thereof.

- ⊕ denotes control monument found
- denotes standard iron post found
- denotes aluminum post found
- denotes standard iron post placed

REM 10
PLAN 24769

SECTION 6

REM 11
PLAN 24769

UNREGISTERED PLAN
BY
R. L. JOHNS, BCLS

REM PCL 1
(EXPLANATORY
PLAN 8320)
OF LOT C, PLAN 6057

REM PCL A
(16 X 10 RODS)
OF DL 390A

STREET

176th

96th
AVENUE

Dedicated for Road
Area = 796.9m²

REM 11
PLAN
24769

This plan lies within the Greater Vancouver Regional District.

The Field Survey represented by this plan was completed by Ronald L. Johns, BCLS, on the 29th day of January, 2008. ECP# 76675.

BCS 92G.017 - 1/24/08

FSCUS
FCS Land Services Limited Partnership
PROJECT REF./JOBING NO.
030200163RD1

CERTIFICATION THAT ELECTOR APPROVAL HAS BEEN OBTAINED

Greater Vancouver Regional District Disposition of Part of Tynehead Regional Park Bylaw No. 1075, 2008

In the matter of the “Greater Vancouver Regional District Disposition of Part of Tynehead Regional Park Bylaw No. 1075, 2008” alternative approval process, whereas:

- A. The deadline for submitting elector response forms against “Greater Vancouver Regional District Disposition of Part of Tynehead Regional Park Bylaw No. 1075, 2008” was May 16, 2008.
- B. The number of electors that comprise at least 10% of the electors of the area to which the elector response opportunity for “Greater Vancouver Regional District Disposition of Part of Tynehead Regional Park Bylaw No. 1075, 2008” applies is 155,152.
- C. A total of 2 elector response forms were received before the deadline.

I hereby determine and certify that elector approval, in accordance with Section 86 of the Community Charter, for “Greater Vancouver Regional District Disposition of Part of Tynehead Regional Park Bylaw No. 1075, 2008” has been obtained.

Dated May 20, 2008

Paulette A. Vetleson
Corporate Secretary

This page left blank intentionally.